



ACQUAPAZZA

The Ultimate Diving Suit
for World-Famous Cameras



Underwater Camera Housing for SIGMA DP2

APSG-DP2

Underwater Camera Housing for SIGMA DP1

APSG-DP1

Protect your SIGMA DP2 with the ultimate diving suit.

It's here! The ultimate diving suit for your SIGMA DP2 and DP1. Shoot photos with the standard wide-angle lens (DP 2: 24.2mm, DP 1: 16.6mm). Use the optional close-up lens, wide conversion lens or dome lens unit to expand your ability to take expressive underwater photographs.

Shutter speed: 1/40 Aperture: F5.6 Sensitivity: ISO 100 WB: Sunlight Strobe: S-2000*1 Lenses: UCL-165M67x2



This picture taken with a DP2. Corners will be darker on photos taken with a DP1 using two close-up lenses.

Use a close-up lens to capture delicate textures.

The fixed-focus lenses of the DP series provide surprisingly high resolution. Although the minimum photographic distance is normally 29cm, a close-up lens allows you to get closer to your subject.

INON Close-up lens (sold separately) UCL-165M67



Close-up lens x 2

APSG-DP2, SPSG-DP1 offer four unique advantages



Double-sealed opening

The opening for inserting and removing the camera is the area most susceptible to water leakage. Our double seal reduces the probability of a leak. Regular maintenance assures you of even more worry-free photography.



Machined aluminum created by refined, three-dimensional manufacturing processes

Three-dimensional processing is a refined machining technique used to create metal molds. This technique produces even, smooth surfaces. This method is seldom used in this level, but we carefully machine each product for you.

SIGMA DP2

THE SIGMA DP2
A FULL SPEC COMPACT
DIGITAL CAMERA WITH ALL
THE POWER OF DSLR



Shutter speed: 1/40 Aperture: F2.8 Sensitivity: ISO 100 WB: Sunlight Strobe: None Lenses: UWL-100 Achromat Type 2 + Dome Lens Unit for UWL-100



This picture taken with a DP2. Corners will be darker on photos taken with a DP1 using dome lens unit.

Take powerful photos with a wide-conversion lens.

A dome lens is ideal for shooting a 90cm angler fish. This wide-angle photo perfectly captures the power of its face. As you can see, the DP series has a reputation for offering excellent resolution even at their widest aperture. INON wide conversion lens, dome lens unit are sold separately.

INON Wide Conversion Lens, Dome Lens Unit (sold separately)
UWL-100 Achromat Type 2, Dome Lens Unit for UWL-100



Wide Conversion Lens+
Dome Lens Unit

Dome Lens Unit



Comes in 10 colors + Pro Matte Black

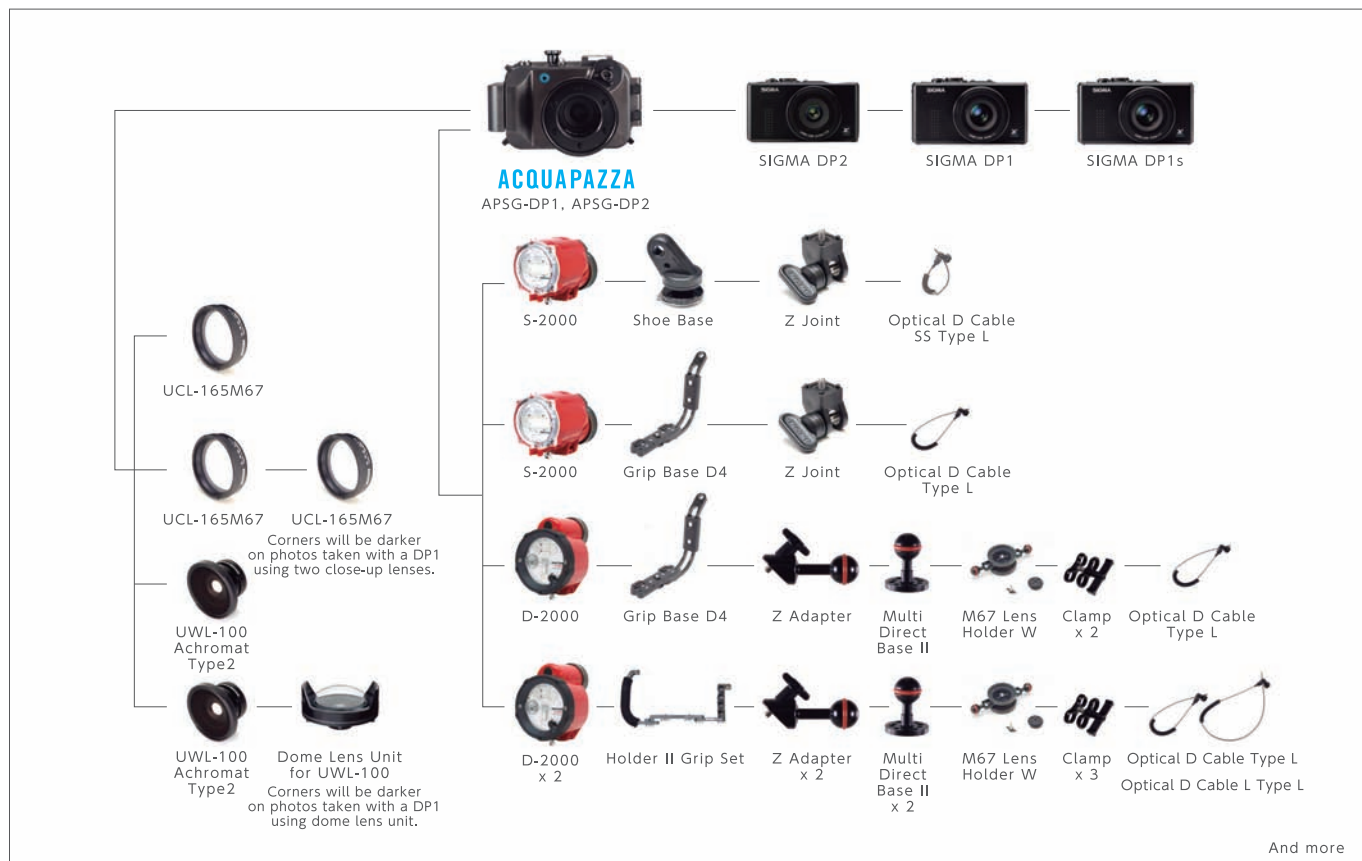
Choose from hard alumite casings in 10 rich colors. When ordering, you can also select the professional specification model (matte black). These tough cases are both scratch and corrosion-resistant. (Case hardness: HV 530; Corrosion resistance 30% greater than hard alumite)



Wide range of lenses, from macro to fish-eye

Normally, the DP1 and DP2 cannot take either close-up or wide angle shots because of their fixed-focus lenses. Overcome this issue by using a close-up lens, wide conversion lens or dome lens, all of which are changeable underwater. Use these lenses to expand your power of expression underwater.

【System Chart】



【11 Colors Available】 Actual color may vary from the one shown in this catalog. Please visit one of our dealers to see our range before ordering.



【Standard Features】

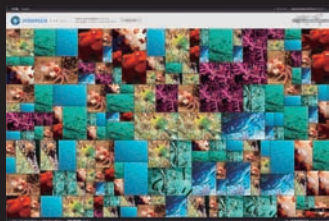
- ◎Opening utilizes reliable double O ring system
- ◎M67 Mount, Large diffuser, 2 tripod screws
- ◎Cap Set for INON [Clear Photo System]
- ◎Rated for a diving depth of up to 50m (approx. 160ft)
- ◎Optical glass : Inside AR Coating
- ◎Body: Corrosion-resistant aluminum
- ◎Buttons, Screws: Stainless steel
- ◎Window, Diffuser: Acrylic fiber
- ◎Size: W164xH104xD127 (Including controls and lens port)
- ◎Weight (on land): Approx. 35.87oz (Including camera battery)
- ◎Weight (underwater): Approx. 8.75oz (Including camera battery)
- Operating temperature: 0°F—104°F
- ◎This model carries an open price.

【Optional Accessories】

- ◎Pro Matte black (deep brown only) 20,000 yen (available when ordering)
- Superb, scratch-resistant HV 520, 30% improved corrosion resistance
- ◎Close-up lens UCL-165 M67 (by INON company)
- ◎Wide conversion lens UWL-100 Achromat Type 2 (by INON company)
- ◎Dome lens unit for UWL-100 (by INON company)



- Use only INON grease. If you use any other grease, it may cause the O-rings to deform, resulting in water leakage.
- In order to prevent water from leaking into the housing from around the opening, please perform maintenance each time the housing is used, as well as regular maintenance.



Underwater photograph management and sharing site

❖ acquapazzaportal.com/

ACQUAPAZZA Product Site ❖ acquapazza.jp/en/